

Washington State Toxicology Laboratory

Simulator Solution Data Entry Review Form

Reviewer KEN DENTON / TRAD GULLBERG Date 9-27-07
Location TOX LAB SEATTLE Batch Number 07012

Form Review Criteria

Preparation date precedes all analysis dates: Okay Not Okay

Data entry corresponds to all chromatograms: Okay Not Okay

All signatures present: Okay Not Okay

Computations:

Avg. solution concentration: Correct Not Correct

Standard deviation: Correct Not Correct

Range: Correct Not Correct

Precision: Correct Not Correct

Equivalent vapor concent.: Correct Not Correct

External Control Information
(lot # and future date): Correct Not Correct

Complies with accuracy and precision requirements established by the
State Toxicologist: Yes No

Corrections Necessary:

RESULT #3 FOR REBECCA F. IS INCORRECT

Comments:

Reviewer Signature: [Signature] Date: 9-27-07
Reviewer Signature: [Signature] Date: 9/27/2007

9/26/2007

C. Kent
Supervisor
CASE NO: C1669127
0677574
PLTE./PETR. EXH. NO. 42
DEPT./RES. EXH. NO.
LABORATORY RECEIVED

WASHINGTON STATE TOXICOLOGY LABORATORY
FORENSIC LABORATORY SERVICES BUREAU
WASHINGTON STATE PATROL
 2203 AIRPORT WAY S, SUITE 360
 SEATTLE, WASHINGTON 98134-2027
 (206) 262-6100 FAX (206) 262-6145

Preparation and certification of 0.08 g/210L Quality Assurance solution
 Batch number 07012 Date: 4/26/2007
 Preparation: 22.2 mL of absolute ethyl alcohol diluted to 18 Liters with water
 Concentration of ethanol (g/100mL) measured by gas chromatography:

RLL
9-27-07
0.098

	Anal 1	Anal 2	Anal 3	Anal 4	Anal 5	Anal 6	Anal 7	Anal 8	Anal 9	Anal 10	Anal 11	Anal 12	Anal 13	Anal 14	Anal 15	Anal 16
1	0.097	0.100	0.097													
2	0.098	0.100	0.098													
3	0.097	0.100	0.097													
4	0.098	0.100	0.098													
5	0.097	0.100	0.097													
Ctrl	0.100	0.101	0.098													

RLL

External Control:

Lot #: A048730 Exp date: 03/2011
 Target concentration: 0.10 g/100mL

Statistics:

Avg. solution concent.: 0.0983 g/100 mL
0.0944 SD: 0.00133 0.00129
 Range (3xSD): 0.0943 to 0.1023 0.1022
 Precision CV (%): 1.3576 %

9-27-07

Equivalent vapor concent.: 0.0799 g/210L

1.3133

Analyst	Name	Signature	Date
1	Rebecca Flaherty	<i>Rebecca Flaherty</i>	04/26/2007
2	Estuardo J. Miranda	<i>Estuardo J. Miranda</i>	04/30/2007
3	Brian Capron	<i>Brian Capron</i>	05/01/2007
4			
5			
6			
7			
8			
9			
10			
11			
12			
13			
14			
15			
16			

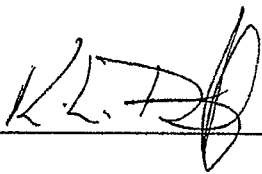
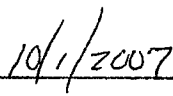
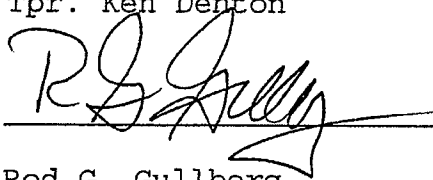
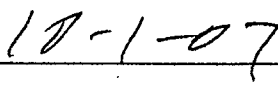
Prepared by: Rebecca Flaherty according to the approved protocol

Notice of Simulator Solution File Review

At the request of the State Toxicologist a review of the following simulator solution records has been accomplished. The following file consists of simulator solution analyses performed and completed by the State Toxicology Laboratory for a specific batch number. The file contains the simulator solution data entry form along with a file review record and the chromatograms generated by the Toxicology Laboratory during the analyses of the solutions. This file has been reviewed by Tpr. Ken Denton and Mr. Rod Gullberg for accuracy and completeness. Where computations regarding simulator solution values have been found to be incorrect, the corrected values have been written in by Mr. Rod Gullberg along with initials and date. The corrected values were then evaluated to ensure that the solution still conformed to those standards established by the State Toxicologist.

Where computation values changed for a specific batch number, the analysts employed by the State Toxicology Laboratory were asked to review the revisions, ensure the solution complied with the criteria established by the State Toxicologist and then re-sign their affidavit. Their signature will appear on their original affidavit along with a statement regarding their review of the results.

Where a dating error occurred that analyst will have made the correction on the original data form including their initials and date and then re-signed their original affidavit.

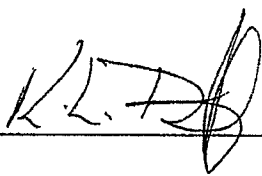
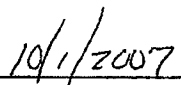
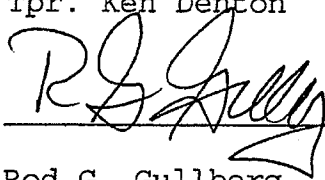
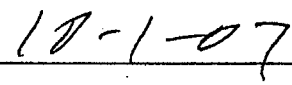
	
Tpr. Ken Denton	Date
	
Rod G. Gullberg	Date

Notice of Simulator Solution File Review

At the request of the State Toxicologist a review of the following simulator solution records has been accomplished. The following file consists of simulator solution analyses performed and completed by the State Toxicology Laboratory for a specific batch number. The file contains the simulator solution data entry form along with a file review record and the chromatograms generated by the Toxicology Laboratory during the analyses of the solutions. This file has been reviewed by Tpr. Ken Denton and Mr. Rod Gullberg for accuracy and completeness. Where computations regarding simulator solution values have been found to be incorrect, the corrected values have been written in by Mr. Rod Gullberg along with initials and date. The corrected values were then evaluated to ensure that the solution still conformed to those standards established by the State Toxicologist.

Where computation values changed for a specific batch number, the analysts employed by the State Toxicology Laboratory were asked to review the revisions, ensure the solution complied with the criteria established by the State Toxicologist and then re-sign their affidavit. Their signature will appear on their original affidavit along with a statement regarding their review of the results.

Where a dating error occurred that analyst will have made the correction on the original data form including their initials and date and then re-signed their original affidavit.

	
Tpr. Ken Denton	Date
	
Rod G. Gullberg	Date

Washington State Toxicology Laboratory

Simulator Solution Data Entry Review Form

Reviewer KEN DENTON / TOS GULLBERG Date 9-27-07
Location TOX LABS SEATTLE Batch Number 07012

Form Review Criteria

Preparation date precedes all analysis dates: Okay Not Okay
Data entry corresponds to all chromatograms: Okay Not Okay
All signatures present: Okay Not Okay

Computations:

Avg. solution concentration: Correct Not Correct

Standard deviation: Correct Not Correct

Range: Correct Not Correct

Precision: Correct Not Correct

Equivalent vapor concent.: Correct Not Correct


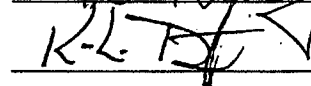
External Control Information
(lot # and future date): Correct Not Correct

Complies with accuracy and precision requirements established by the
State Toxicologist: Yes No

Corrections Necessary:

RESULT #3 FOR REBECCA F. IS INCORRECT

Comments:

Reviewer Signature:  Date: 9-27-07
Reviewer Signature:  Date: 9/27/2007

WASHINGTON STATE TOXICOLOGY LABORATORY
FORENSIC LABORATORY SERVICES BUREAU
WASHINGTON STATE PATROL
2203 AIRPORT WAY S, SUITE 360
SEATTLE, WASHINGTON 98134-2027
(206) 262-6100 FAX (206) 262-6145

Preparation and certification of **0.08** g/210L Quality Assurance solution
 Batch number **07012** Date: 4/26/2007
 Preparation: 22.2 mL of absolute ethyl alcohol diluted to 18 Liters with water
 Concentration of ethanol (g/100mL) measured by gas chromatography:

RFB
9-27-07
0.098

	Anal 1	Anal 2	Anal 3	Anal 4	Anal 5	Anal 6	Anal 7	Anal 8	Anal 9	Anal 10	Anal 11	Anal 12	Anal 13	Anal 14	Anal 15	Anal 16
1	0.097	0.100	0.097													
2	0.098	0.100	0.098													
3	0.097	0.100	0.097													
4	0.098	0.100	0.098													
5	0.097	0.100	0.097													
Ctrl	0.100	0.101	0.098													

RFB

9-27-07

External Control:
 Lot #: A048730 Exp date: 03/2011
 Target concentration: 0.10 g/100mL

Statistics:
 Avg. solution concent.: 0.0983 g/100 mL
0.0944 SD: 0.00133 *0.00129*
 Range (3xSD): 0.0943 to 0.1023 *0.1022*
 Precision CV (%): 1.2576 %

Equivalent vapor concent.: 0.0799 g/210L

1.3133

Analyst	Name	Signature	Date
1	Rebecca Flaherty	<i>Rebecca Flaherty</i>	04/26/2007
2	Estuardo J. Miranda	<i>Estuardo J. Miranda</i>	04/30/2007
3	Brian Capron	<i>Brian Capron</i>	05/01/2007
4			
5			
6			
7			
8			
9			
10			
11			
12			
13			
14			
15			
16			

Prepared by: Rebecca Flaherty according to the approved protocol

CHRISTINE O. GREGOIRE
Governor



JOHN R. BATISTE
Chief

STATE OF WASHINGTON
WASHINGTON STATE PATROL
WASHINGTON STATE TOXICOLOGY LABORATORY

2203 Airport Way South, Suite 360 • Seattle, Washington 98134-2927 • (206) 262-6100 • FAX (206) 262-6145

DATAMASTER QUALITY ASSURANCE SOLUTION
CERTIFICATION


I, Rebecca Flaherty, do certify under penalty of perjury that:

I am employed by the Washington State Toxicology Laboratory, and a part of my responsibilities includes preparing and testing the alcohol solutions for the DataMaster breath test instrument.

I possess the following qualifications: BS degrees in Biochemistry and Psychobiology and MS degree in Forensic Science.

The quality assurance solution, Lot Number 07012, was prepared in the Washington State Toxicology Laboratory on 4/26/2007. I examined and tested this solution. The mean concentration of the alcohol was 0.0983 grams per 100ml.

Dated: 5/3/2007
Seattle, WA


Rebecca Flaherty
Forensic Toxicologist

RF/jr
RFQA

A review of solution batch records was recently completed. After this review, I checked the file for this solution and reviewed all changes that were made. I found that the solution still conformed to those standards established by the State Toxicologist for the certification of simulator solutions.

 09/28/07

CHRISTINE O. GREGOIRE
Governor



JOHN R. BATISTE
Chief

STATE OF WASHINGTON
WASHINGTON STATE PATROL
WASHINGTON STATE TOXICOLOGY LABORATORY

2203 Airport Way South, Suite 360 • Seattle, Washington 98134-2927 • (206) 262-6100 • FAX (206) 262-6145

DATAMASTER QUALITY ASSURANCE SOLUTION
CERTIFICATION

I, Estuardo J. Miranda, do certify under penalty of perjury that:

I am employed by the Washington State Toxicology Laboratory, and a part of my responsibilities includes preparing and testing the alcohol solutions for the DataMaster breath test instrument.

I possess the following qualifications: Bachelor of Science in Chemistry, Master of Science in Zoology and nine years experience in Forensic Toxicology.

The quality assurance solution, Lot Number 07012, was prepared in the Washington State Toxicology Laboratory on 4/26/2007. I examined and tested this solution. The mean concentration of the alcohol was 0.0983 grams per 100ml.

Dated: 5/3/2007
Seattle, WA

Estuardo J. Miranda
Forensic Toxicologist

EM/jr
EMQA

A review of solution batch records was recently completed. After this review, I checked the file for this solution and reviewed all changes that were made. I found that the solution still conformed to those standards established by the State Toxicologist for the certification of simulator solutions.

CHRISTINE O. GREGOIRE
Governor



JOHN R. BATISTE
Chief

STATE OF WASHINGTON
WASHINGTON STATE PATROL
WASHINGTON STATE TOXICOLOGY LABORATORY

2203 Airport Way South, Suite 360 • Seattle, Washington 98134-2927 • (206) 262-6100 • FAX (206) 262-6145

DATAMASTER QUALITY ASSURANCE SOLUTION
CERTIFICATION

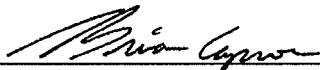
I, Brian Capron, do certify under penalty of perjury that:

I am employed by the Washington State Toxicology Laboratory, and a part of my responsibilities includes preparing and testing the alcohol solutions for the DataMaster breath test instrument.

I possess the following qualifications: BS degree in Biology and nine years of experience in forensic toxicology.

The quality assurance solution, Lot Number 07012, was prepared in the Washington State Toxicology Laboratory on 4/26/2007. I examined and tested this solution. The mean concentration of the alcohol was 0.0983 grams per 100ml.

Dated: 5/3/2007
Seattle, WA



Brian Capron
Forensic Toxicologist

BC/jr
BCQA

A review of solution batch records was recently completed. After this review, I checked the file for this solution and reviewed all changes that were made. I found that the solution still conformed to those standards established by the State Toxicologist for the certification of simulator solutions.

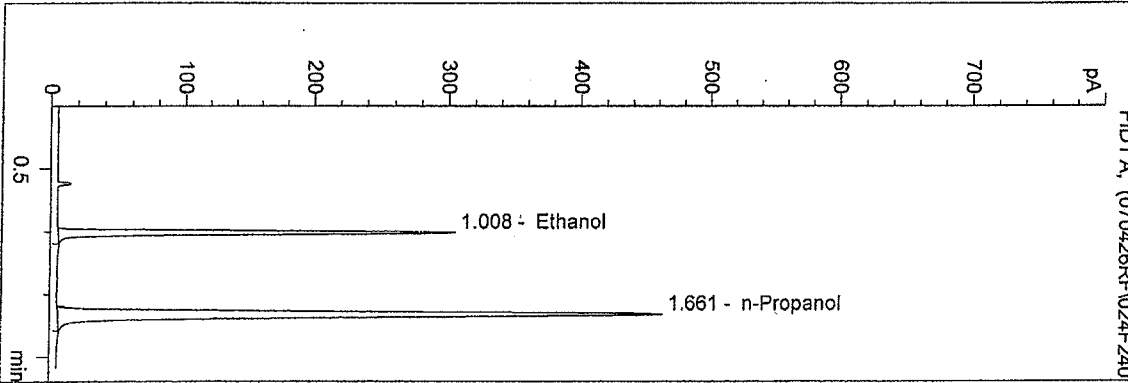
 10.1.07



D:\HPCHEM\1\METHODS\BLDALCO.M
 4/26/2007 2:02:28 PM
 Instrument 4
 DB-ALC1

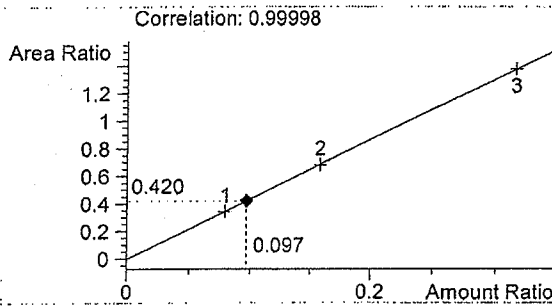
07012 - QA08A
 Rebecca Flaherty

vial # 24

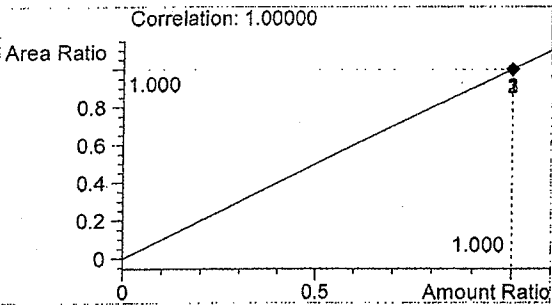


#	Compound	Area	RT
1	Ethanol	603	1.008
2	n-Propanol	1438	1.661

Totals:



Ethanol 0.097 g/100ml



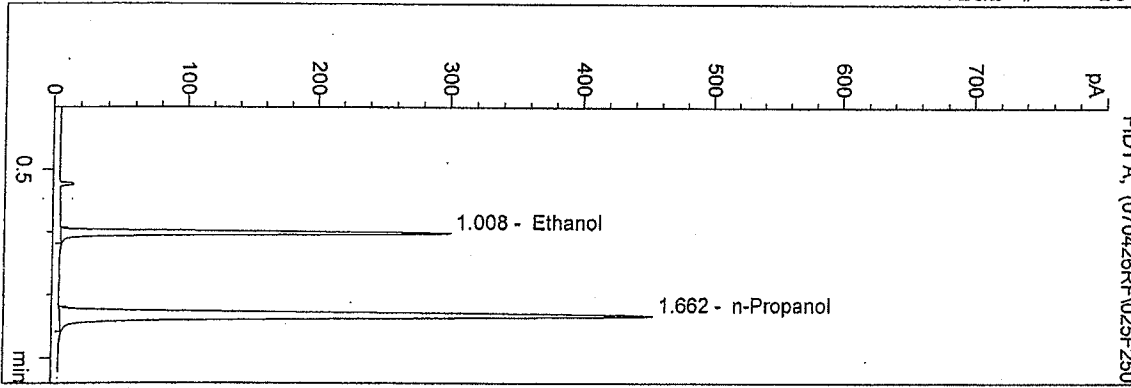
n-Propanol 1.000 g/100ml

WASHINGTON STATE TOXICOLOGY LABORATORY

D:\HPCHEM\1\METHODS\BLDALCO.M
 4/26/2007 2:11:05 PM
 Instrument 4
 DB-ALC1

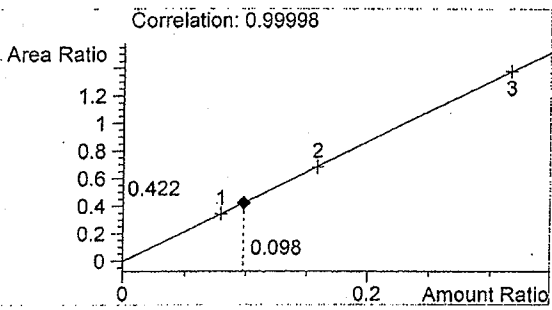
07012 - QA08B
 Rebecca Flaherty

vial # 25

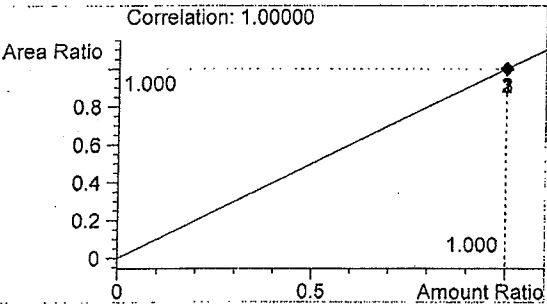


#	Compound	Area	RT
1	Ethanol	596	1.008
2	n-Propanol	1411	1.662

Totals:



Ethanol 0.098 g/100ml

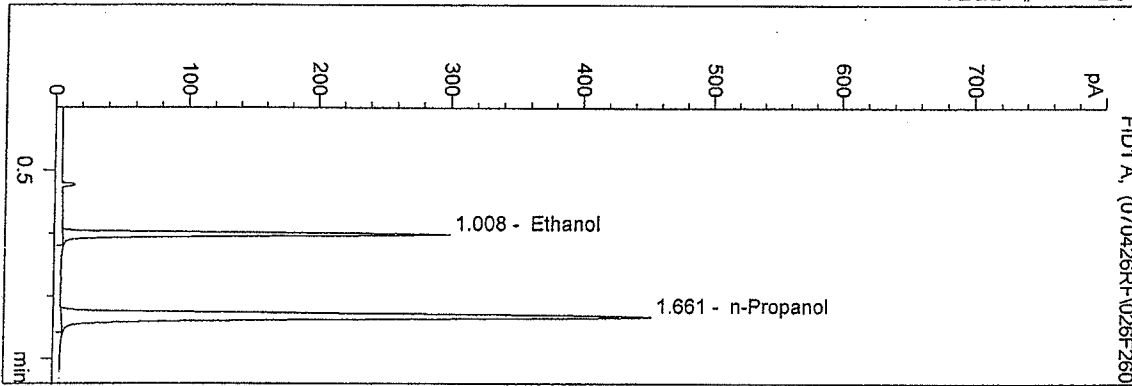


n-Propanol 1.000 g/100ml

D:\HPCHEM\1\METHODS\BLDALCO.M
 4/26/2007 2:14:27 PM
 Instrument 4
 DB-ALC1

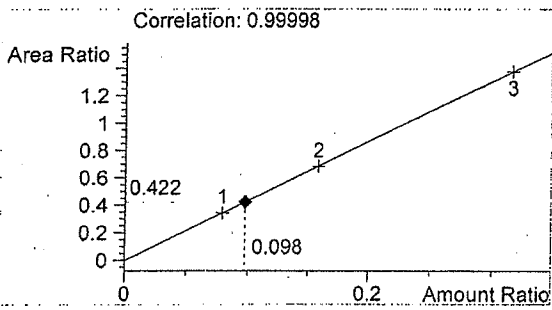
07012 - QA08C
 Rebecca Flaherty

vial # 26

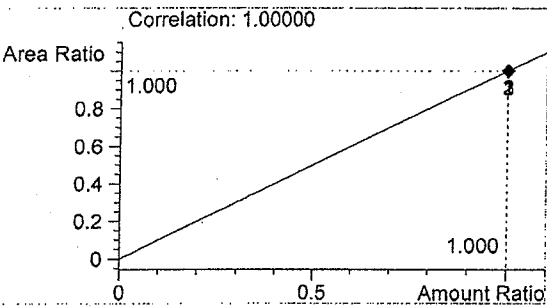


#	Compound	Area	RT
1	Ethanol	594	1.008
2	n-Propanol	1407	1.661

Totals:



Ethanol 0.098 g/100ml



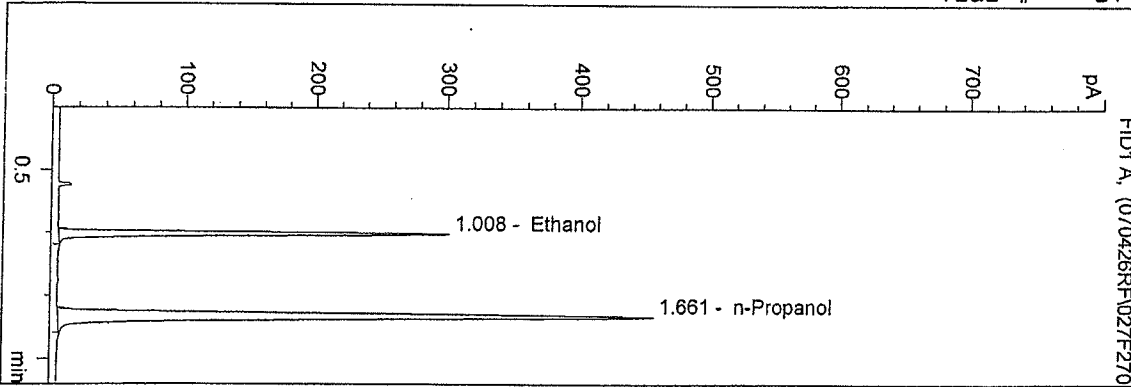
n-Propanol 1.000 g/100ml

WASHINGTON STATE TOXICOLOGY LABORATORY

D:\HPCHEM\1\METHODS\BLDALCO.M
 4/26/2007 2:17:44 PM
 Instrument 4
 DB-ALC1

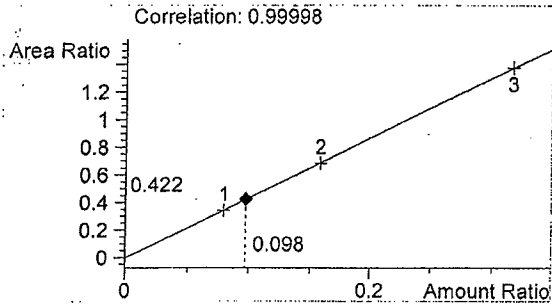
07012 - QA08D
 Rebecca Flaherty

vial # 27

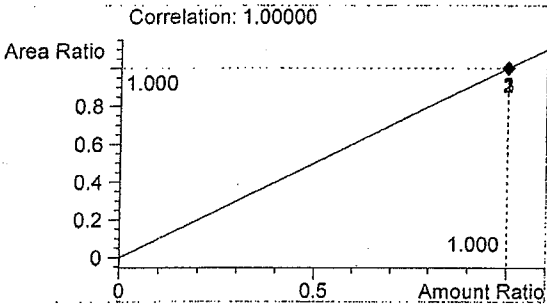


#	Compound	Area	RT
1	Ethanol	600	1.008
2	n-Propanol	1421	1.661

Totals:



Ethanol 0.098 g/100ml



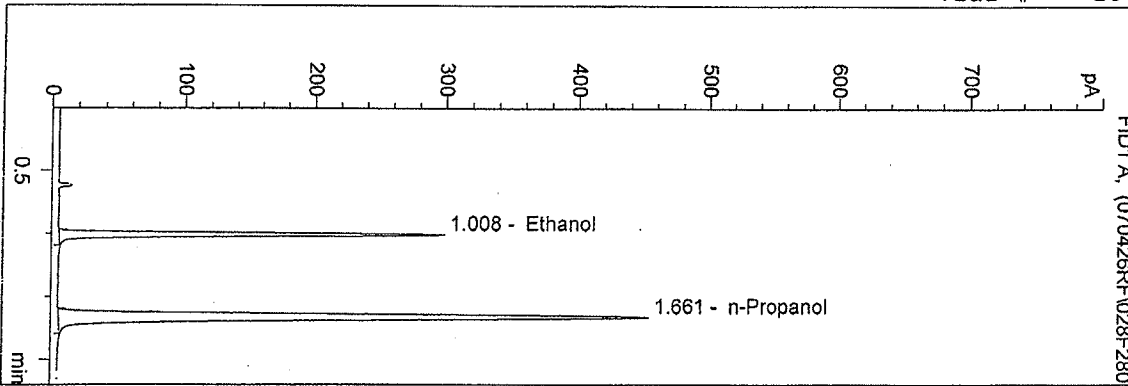
n-Propanol 1.000 g/100ml

WASHINGTON STATE TOXICOLOGY LABORATORY

D:\HPCHEM\1\METHODS\BLDALCO.M
 4/26/2007 2:20:59 PM
 Instrument 4
 DB-ALC1

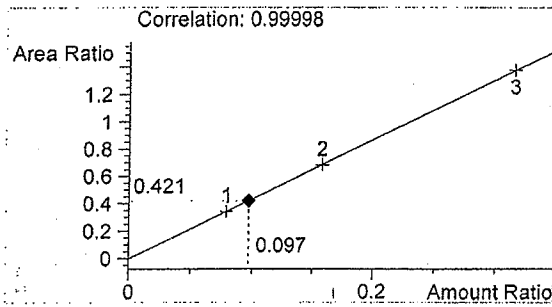
07012 - QA08E
 Rebecca Flaherty

vial # 28

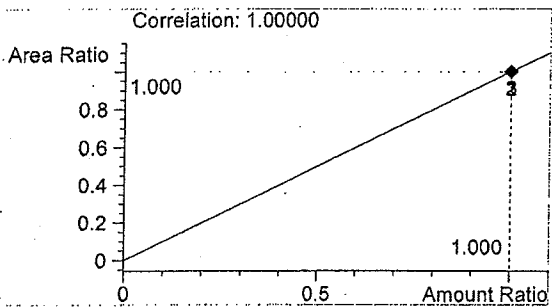


#	Compound	Area	RT
1	Ethanol	595	1.008
2	n-Propanol	1412	1.661

Totals:



Ethanol 0.097 g/100ml

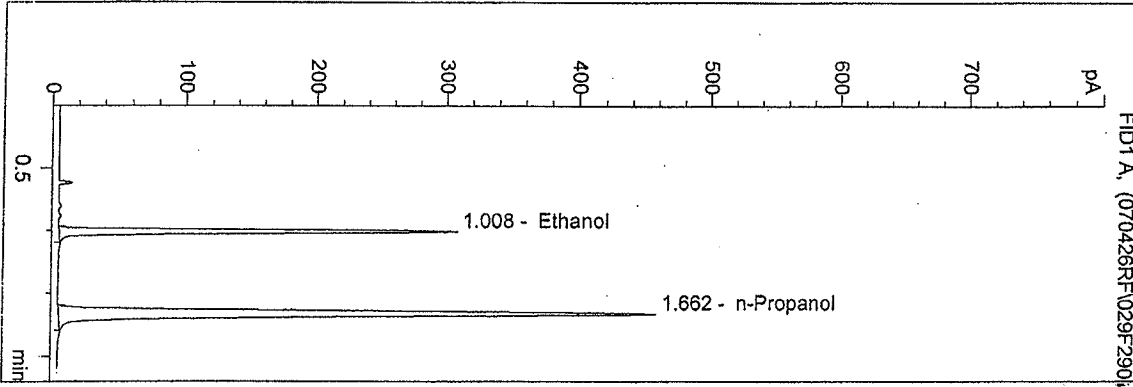


n-Propanol 1.000 g/100ml

D:\HPCHEM\1\METHODS\BLDALCO.M
4/26/2007 2:24:15 PM
Instrument 4
DB-ALC1

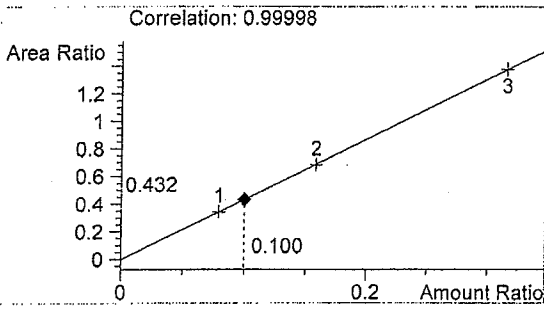
0.10 CONTROL rf
Rebecca Flaherty

vial # 29

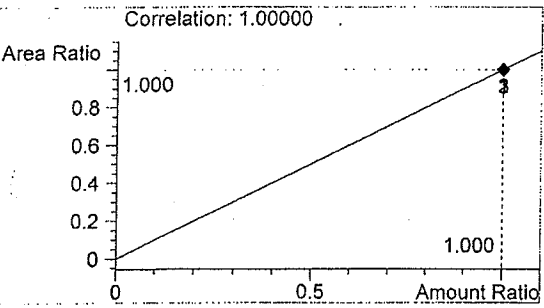


#	Compound	Area	RT
1	Ethanol	617	1.008
2	n-Propanol	1428	1.662

Totals:



Ethanol 0.100 g/100ml



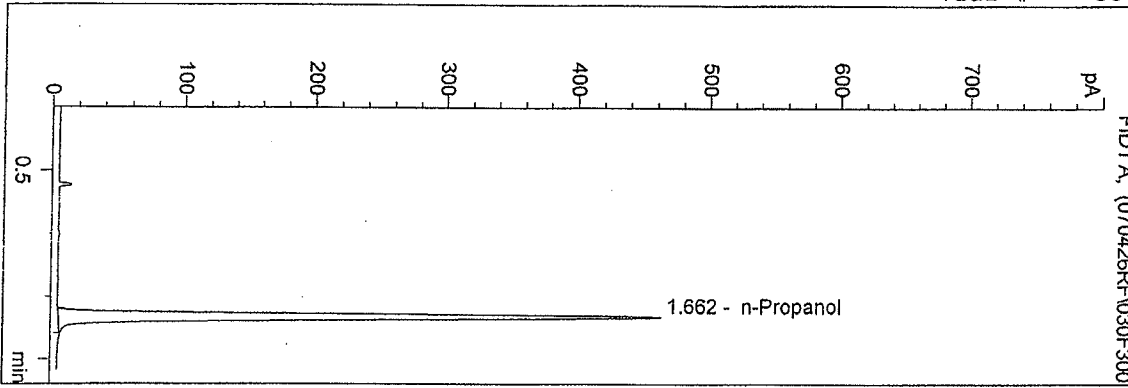
n-Propanol 1.000 g/100ml

WASHINGTON STATE TOXICOLOGY LABORATORY

D:\HPCHEM\1\METHODS\BLDALCO.M
 4/26/2007 2:27:27 PM
 Instrument 4
 DB-ALC1

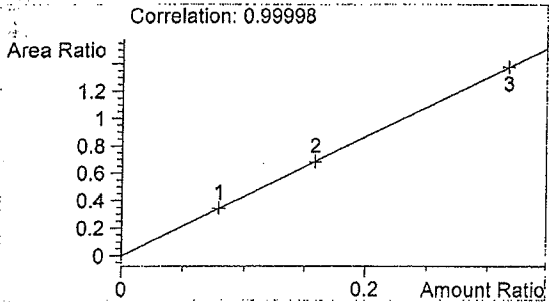
BLANK
 Rebecca Flaherty

vial # 30

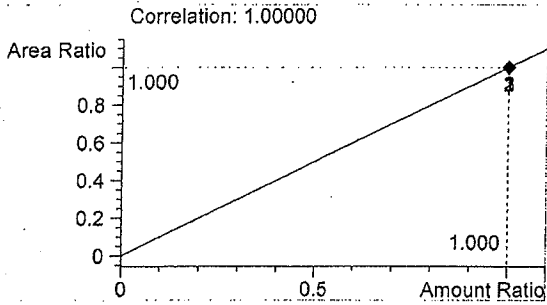


#	Compound	Area	RT
1	Ethanol	0	0.000
2	n-Propanol	1443	1.662

Totals:



Ethanol 0.000 g/100ml

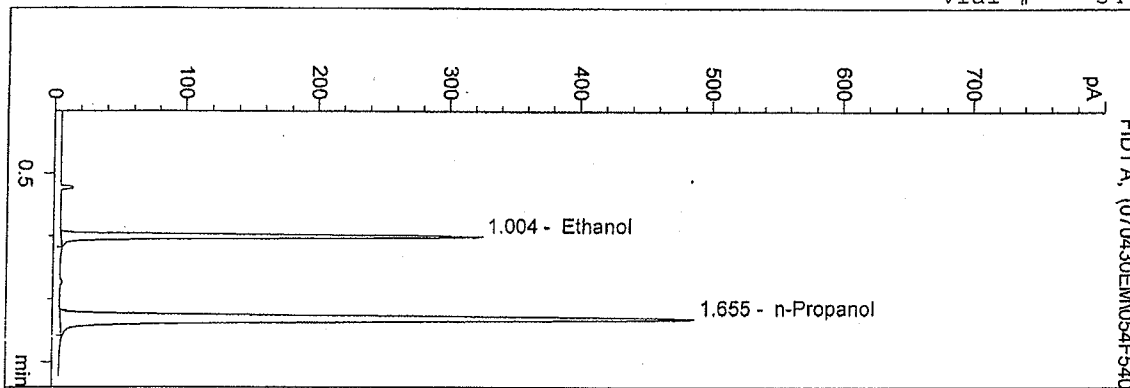


n-Propanol 1.000 g/100ml

D:\HPCHEM\1\METHODS\BLDALCO.M
 4/30/2007 4:16:11 PM
 Instrument 4
 DB-ALC1

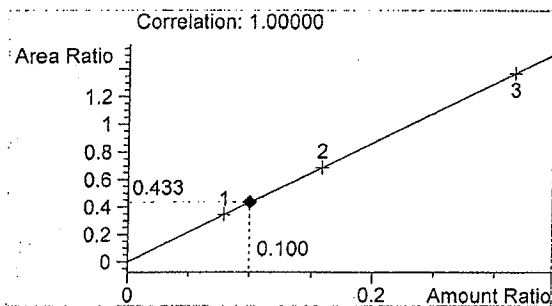
Q.A. Sol 07012-1
 Estuardo J. Miranda

vial # 54

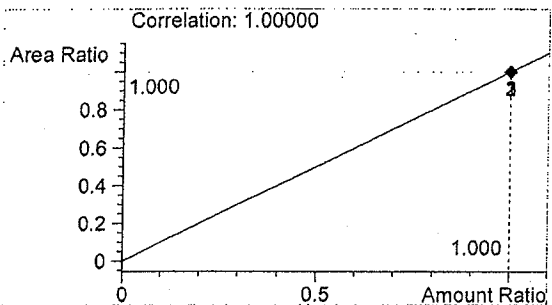


#	Compound	Area	RT
1	Ethanol	662	1.004
2	n-Propanol	1526	1.655

Totals:



Ethanol 0.100 g/100ml



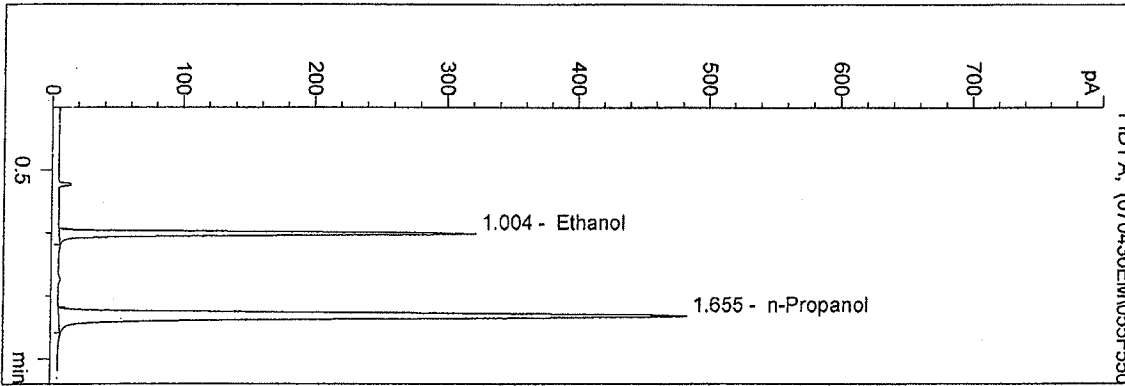
n-Propanol 1.000 g/100ml

WASHINGTON STATE TOXICOLOGY LABORATORY

D:\HPCHEM\1\METHODS\BLDALCO.M
 4/30/2007 4:19:30 PM
 Instrument 4
 DB-ALC1

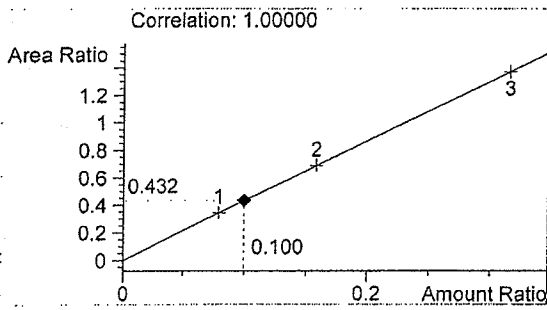
Q.A. Sol 07012-2
 Estuardo J. Miranda

vial # 55

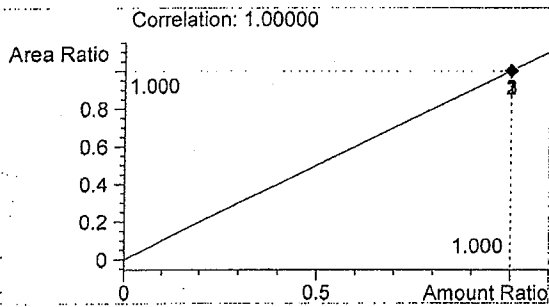


#	Compound	Area	RT
1	Ethanol	655	1.004
2	n-Propanol	1514	1.655

Totals:



Ethanol 0.100 g/100ml



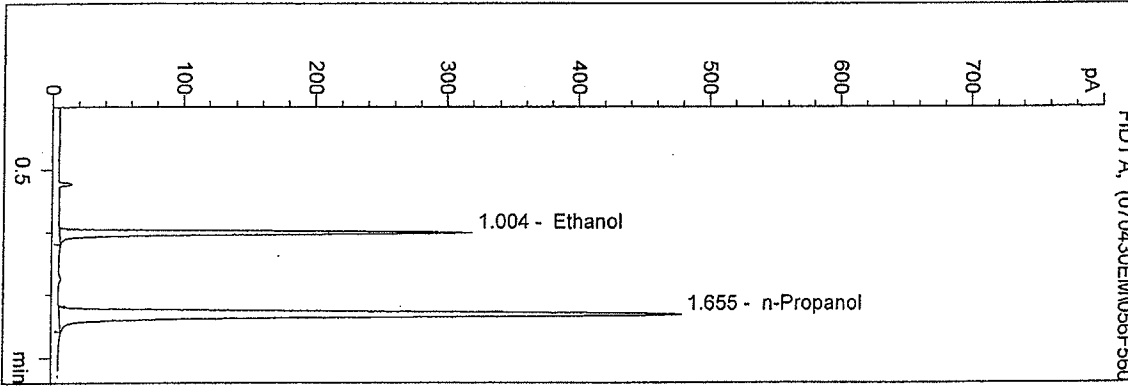
n-Propanol 1.000 g/100ml

WASHINGTON STATE TOXICOLOGY LABORATORY

D:\HPCHEM\1\METHODS\BLDALCO.M
 4/30/2007 4:22:49 PM
 Instrument 4
 DB-ALCl

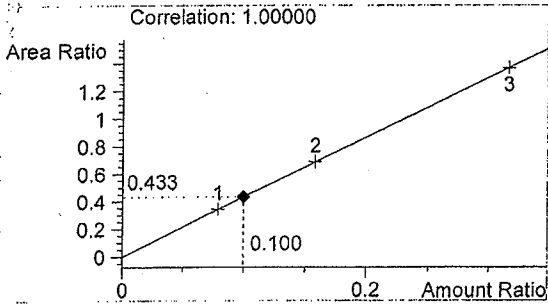
Q.A. Sol 07012-3
 Estuardo J. Miranda

vial # 56

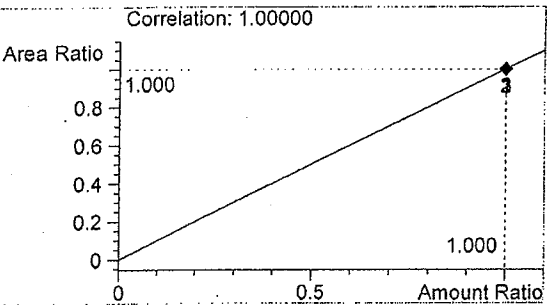


#	Compound	Area	RT
1	Ethanol	649	1.004
2	n-Propanol	1498	1.655

Totals:



Ethanol 0.100 g/100ml



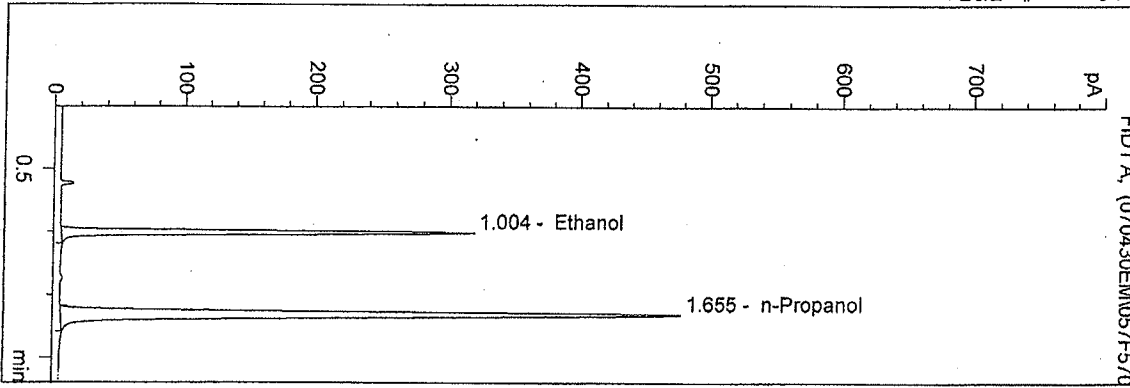
n-Propanol 1.000 g/100ml

WASHINGTON STATE TOXICOLOGY LABORATORY

D:\HPCHEM\1\METHODS\BLDALCO.M
 4/30/2007 4:26:06 PM
 Instrument 4
 DB-ALC1

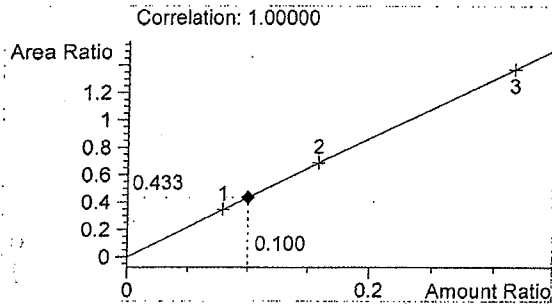
Q.A. Sol 07012-4
 Estuardo J. Miranda

vial # 57

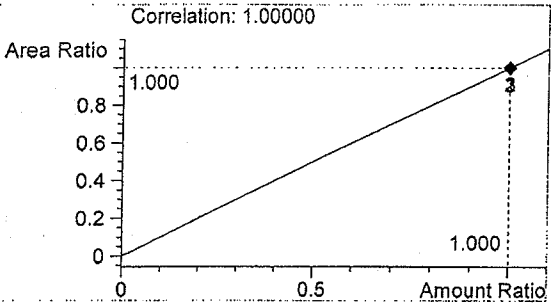


#	Compound	Area	RT
1	Ethanol	647	1.004
2	n-Propanol	1495	1.655

Totals:



Ethanol 0.100 g/100ml



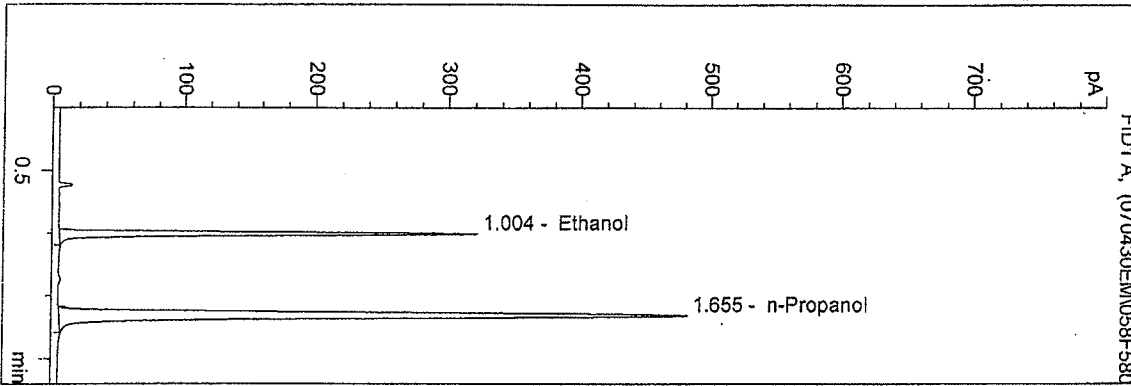
n-Propanol 1.000 g/100ml

WASHINGTON STATE TOXICOLOGY LABORATORY

D:\HPCHEM\1\METHODS\BLDALCO.M
 4/30/2007 4:29:23 PM
 Instrument 4
 DB-ALCl

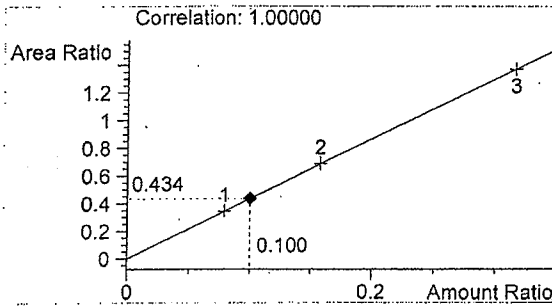
Q.A. Sol 07012-5
 Estuardo J. Miranda

vial # 58

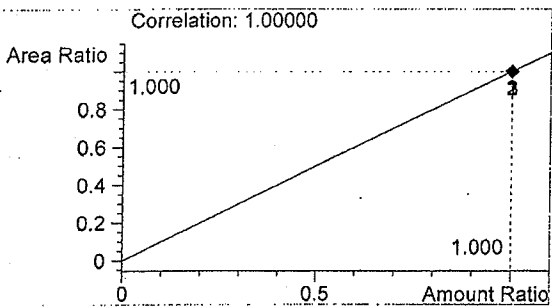


#	Compound	Area	RT
1	Ethanol	654	1.004
2	n-Propanol	1509	1.655

Totals:



Ethanol 0.100 g/100ml



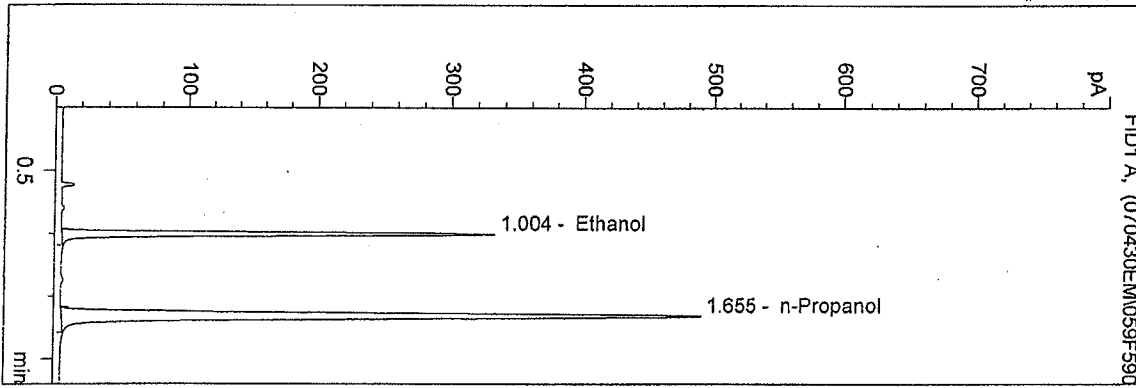
n-Propanol 1.000 g/100ml

WASHINGTON STATE TOXICOLOGY LABORATORY

D:\HPCHEM\1\METHODS\BLDALCO.M
 4/30/2007 4:32:37 PM
 Instrument 4
 DB-ALC1

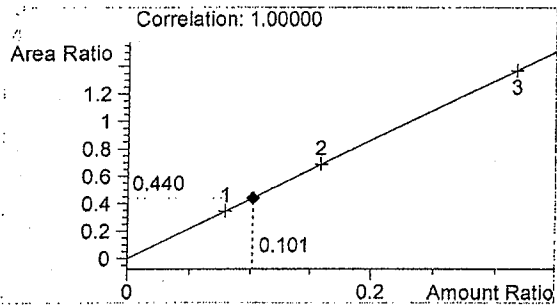
0.100 EM Control
 Estuardo J. Miranda

vial # 59

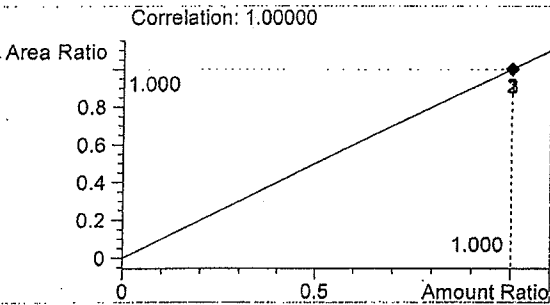


#	Compound	Area	RT
1	Ethanol	675	1.004
2	n-Propanol	1536	1.655

Totals:



Ethanol 0.101 g/100ml

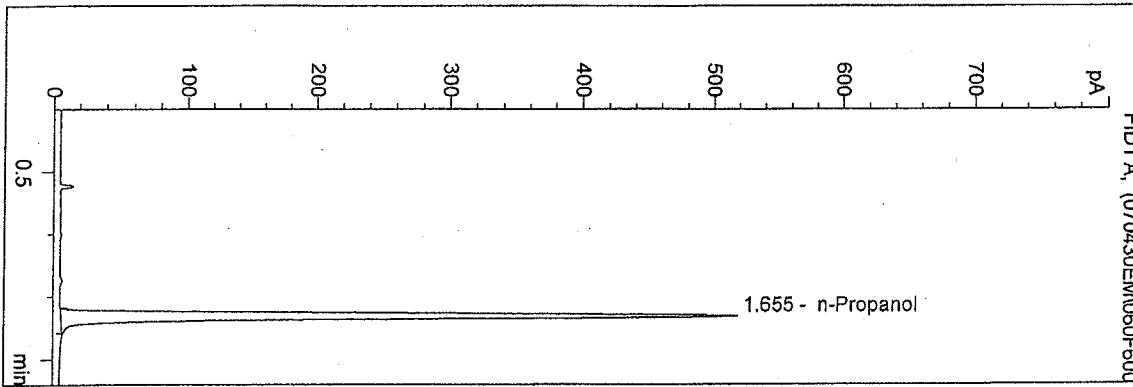


n-Propanol 1.000 g/100ml

D:\HPCHEM\1\METHODS\BLDALCO.M
 4/30/2007 4:36:11 PM
 Instrument 4
 DB-ALC1

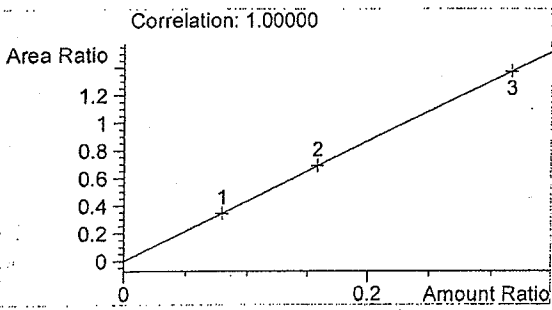
BLANK
 Estuardo J. Miranda

vial # 60

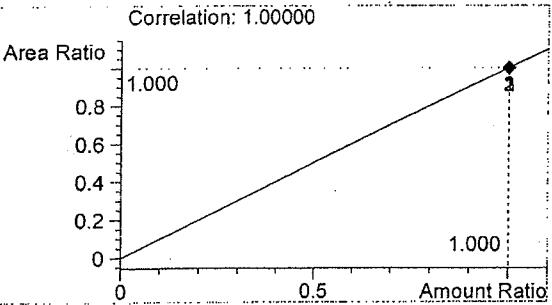


#	Compound	Area	RT
1	Ethanol	0	0.000
2	n-Propanol	1626	1.655

Totals:



Ethanol 0.000 g/100ml



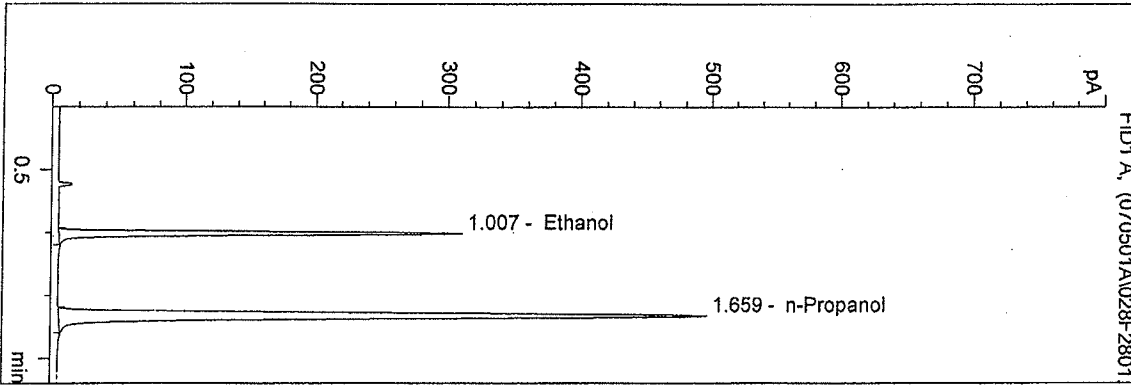
n-Propanol 1.000 g/100ml

WASHINGTON STATE TOXICOLOGY LABORATORY

D:\HPCHEM\1\METHODS\BLDALCO.M
 5/1/2007 8:29:39 AM
 Instrument 4
 DB-ALC1

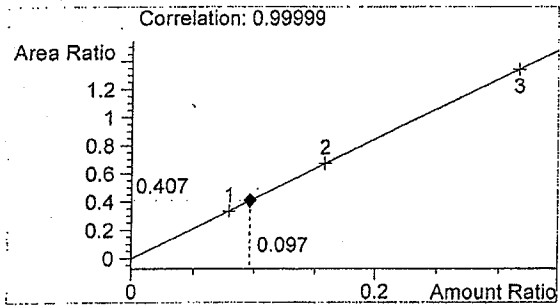
07012
 bcapron

vial # 28

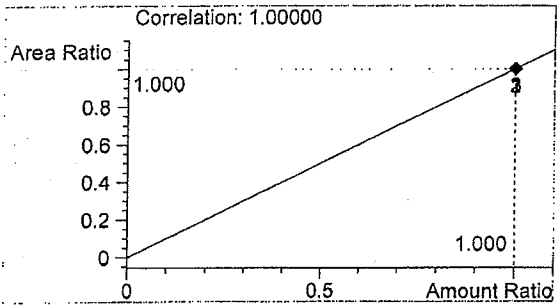


#	Compound	Area	RT
1	Ethanol	633	1.007
2	n-Propanol	1555	1.659

Totals:



Ethanol 0.097 g/100ml



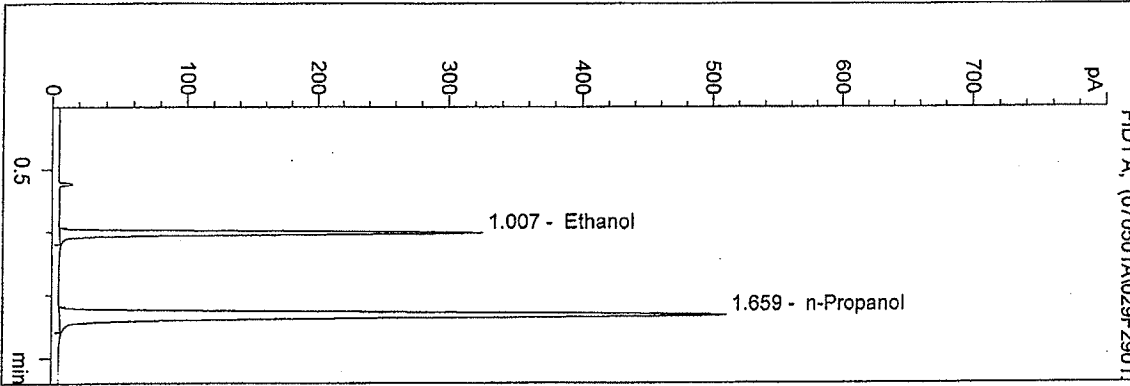
n-Propanol 1.000 g/100ml

WASHINGTON STATE TOXICOLOGY LABORATORY

D:\HPCHEM\1\METHODS\BLDALCO.M
 5/1/2007 8:32:57 AM
 Instrument 4
 DB-ALC1

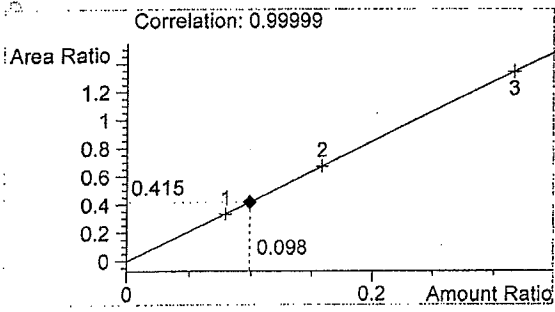
07012
 bcapron

vial # 29

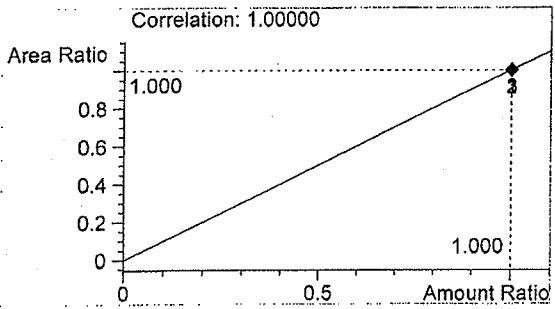


#	Compound	Area	RT
1	Ethanol	665	1.007
2	n-Propanol	1600	1.659

Totals:



Ethanol 0.098 g/100ml



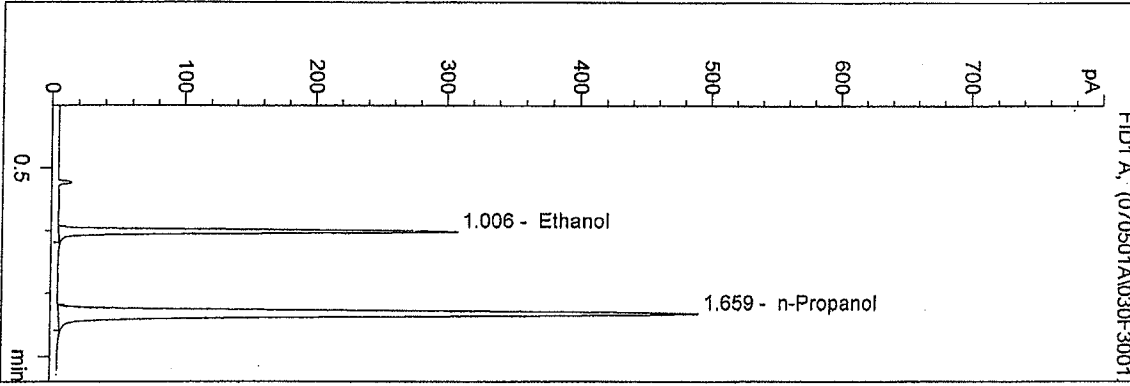
n-Propanol 1.000 g/100ml

WASHINGTON STATE TOXICOLOGY LABORATORY

D:\HPCHEM\1\METHODS\BLDALCO.M
 5/1/2007 8:36:14 AM
 Instrument 4
 DB-ALC1

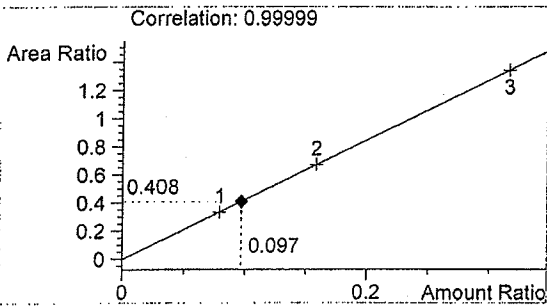
07012
 bcapron

vial # 30

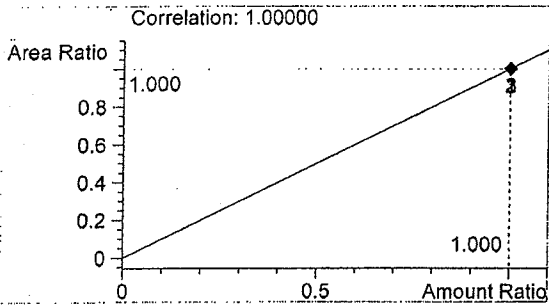


#	Compound	Area	RT
1	Ethanol	628	1.006
2	n-Propanol	1538	1.659

Totals:



Ethanol 0.097 g/100ml

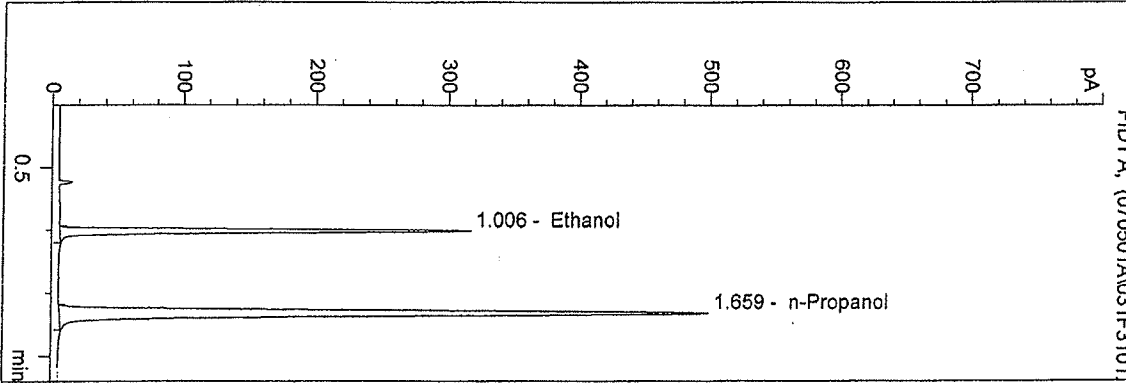


n-Propanol 1.000 g/100ml

D:\HPCHEM\1\METHODS\BLDALCO.M
 5/1/2007 8:41:37 AM
 Instrument 4
 DB-ALC1

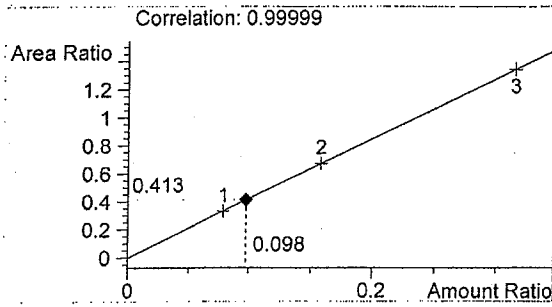
07012
 bcapron

vial # 31

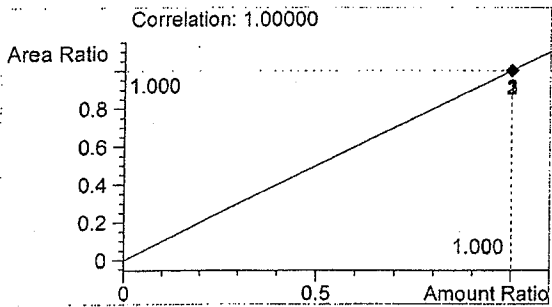


#	Compound	Area	RT
1	Ethanol	644	1.006
2	n-Propanol	1562	1.659

Totals:



Ethanol 0.098 g/100ml



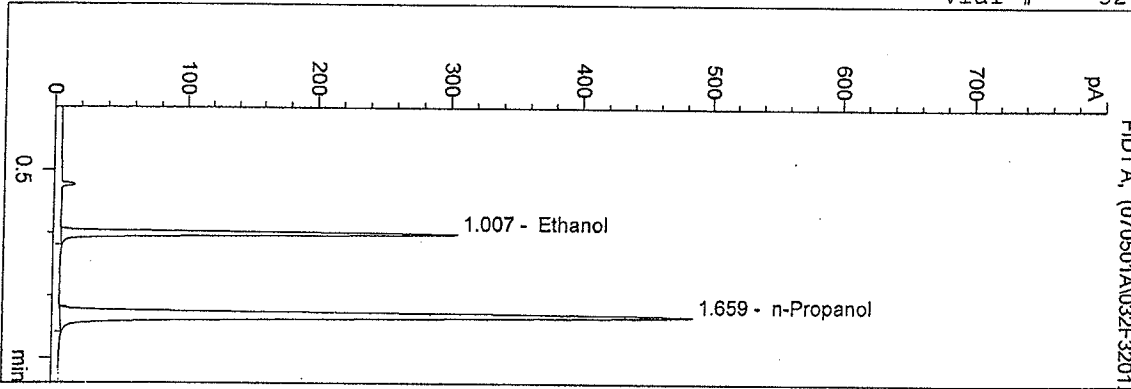
n-Propanol 1.000 g/100ml

WASHINGTON STATE TOXICOLOGY LABORATORY

D:\HPCHEM\1\METHODS\BLDALCO.M
 5/1/2007 8:45:12 AM
 Instrument 4
 DB-ALC1

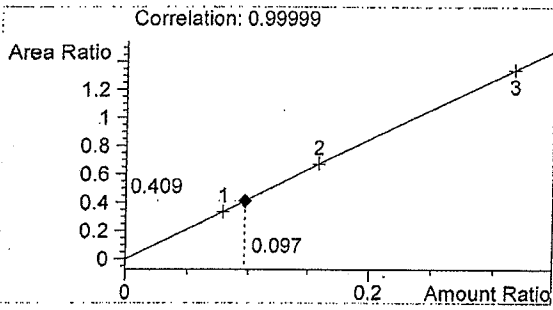
07012
 bcapron

vial # 32

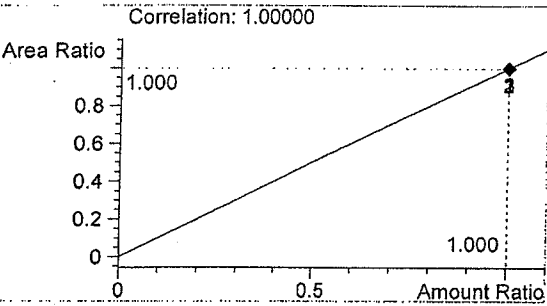


#	Compound	Area	RT
1	Ethanol	622	1.007
2	n-Propanol	1522	1.659

Totals:



Ethanol 0.097 g/100ml



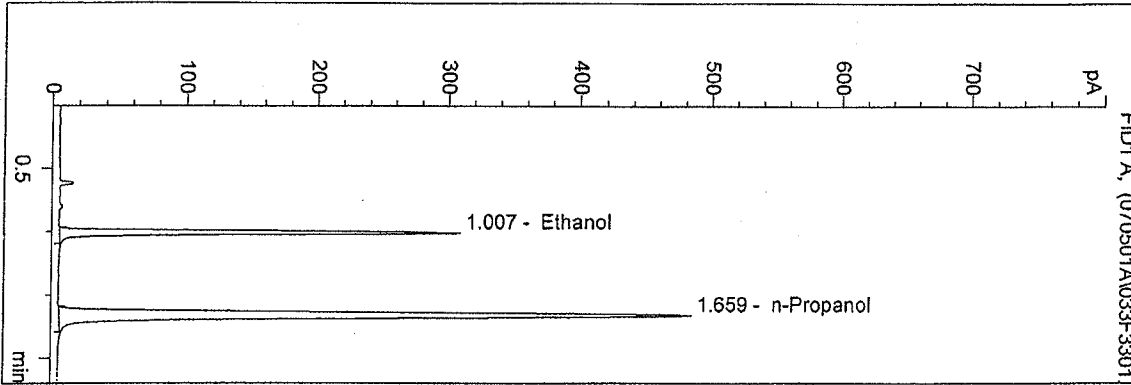
n-Propanol 1.000 g/100ml

WASHINGTON STATE TOXICOLOGY LABORATORY

D:\HPCHEM\1\METHODS\BLDALCO.M
 5/1/2007 8:48:28 AM
 Instrument 4
 DB-ALC1

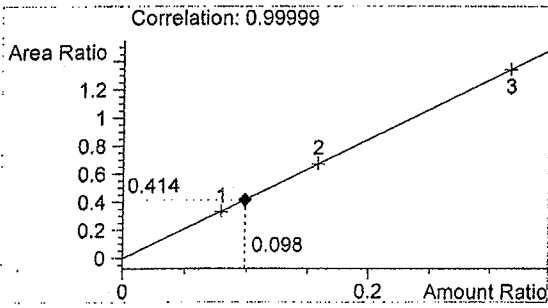
0.10 control bc
 bcapron

vial # 33

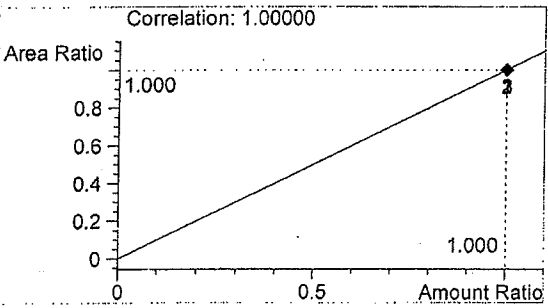


#	Compound	Area	RT
1	Ethanol	629	1.007
2	n-Propanol	1519	1.659

Totals:



Ethanol 0.098 g/100ml



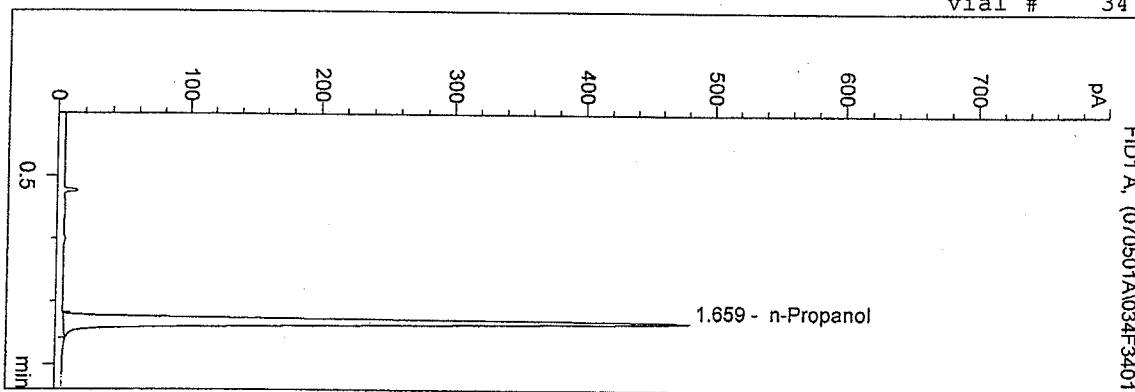
n-Propanol 1.000 g/100ml

WASHINGTON STATE TOXICOLOGY LABORATORY

D:\HPCHEM\1\METHODS\BLDALCO.M
 5/1/2007 8:51:44 AM
 Instrument 4
 DB-ALC1

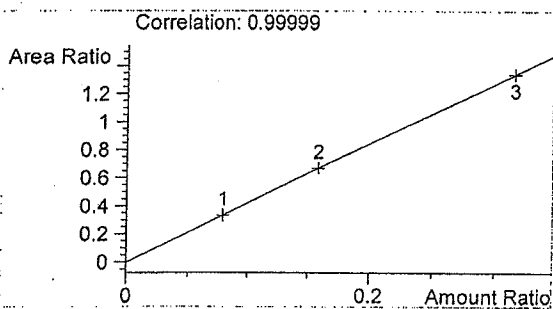
blank
 bcapron

vial # 34

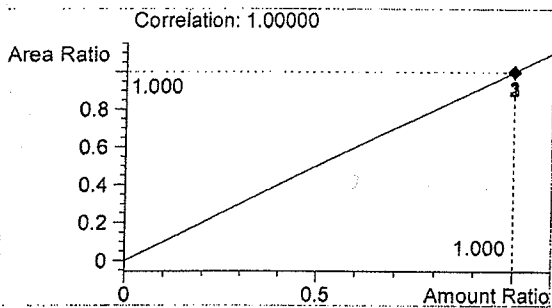


#	Compound	Area	RT
1	Ethanol	0	0.000
2	n-Propanol	1509	1.659

Totals:



Ethanol 0.000 g/100ml



n-Propanol 1.000 g/100ml